

QuickTime Pro: A Menu Tour

In this tutorial, you'll learn the basics of working with stand-alone and Web-based QuickTime media using the QuickTime 4 Pro Player application and PictureViewer. You'll become familiar with the menus and options of QuickTime 4 Pro.

Activities in this session

- Configuring QuickTime via the QuickTime control panel
- Using PictureViewer
- Using the QuickTime Player

Time limit

This activity lasts approximately 15 minutes.

Before you begin

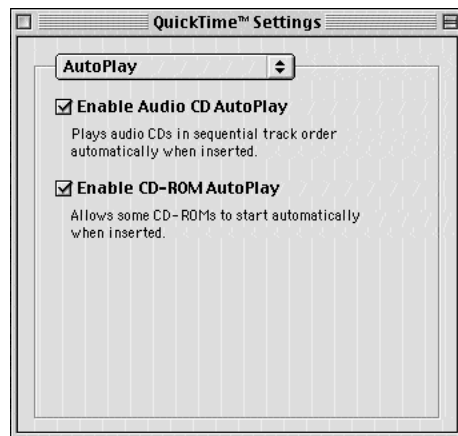
Close any open applications.

Configuring QuickTime on your computer

- 1 Choose Control Panels from the Apple () menu; then choose QuickTime Settings from the submenu.

You use the pop-up menu at the top of the window that appears to select from a number of configuration options.

- 2 Choose AutoPlay from the pop-up menu.



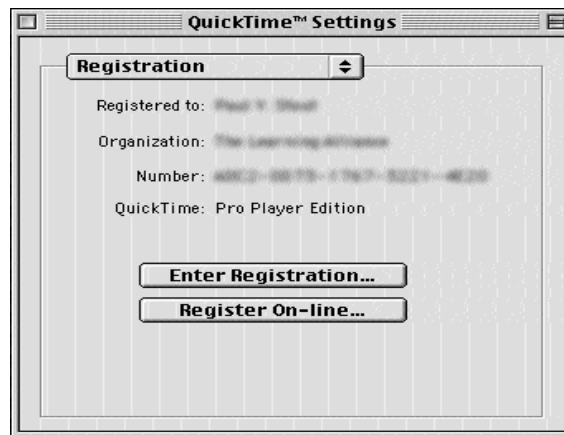
Here you can set whether or not to have an audio CD start playing automatically when inserted into a CD-ROM drive on your computer.

- 3 Choose Connection Speed from the pop-up menu.

When you install QuickTime 4, you are prompted for the speed of your network connection. Should that connection method change, you can update the speed setting in this part of the QuickTime Settings control panel window.

- 4 Choose Registration from the pop-up menu.

You use this window when you update to the enhanced version of QuickTime Player after receiving a registration number from Apple. Your screen should show a registration number and indicate that you are using the Pro Player Edition.



- 5 Finally, choose Streaming Proxy from the pop-up menu.

This is where you set the protocol and port specifications for viewing movies that are streamed over the Internet.

To learn more about this topic, click the link—it takes you to an Internet page called Firewalls & QuickTime 4 at the Apple Web site.

Note: In order for the link to work, you must already be connected to the Internet.

- 6 Close the QuickTime Settings window by clicking the close box at the upper-left of the window.

You can explore the other options available in the pop-up menu on your own.

Viewing and manipulating image files using PictureViewer

- 1 Open the QuickTime folder on your hard disk and locate the PictureViewer application icon.

Do not open the application yet.

Tip: If the PictureViewer application isn't in the QuickTime folder, choose Find from the File menu and use Sherlock to locate it.

- 2 Open any folder on your hard disk that contains still images of any type (TIFF, GIF, PICT, Photoshop, and so on).

- 3 Position the folder window beside the QuickTime Folder window so that you can see the icons for the images as well as the icon for the PictureViewer application.

- 4 Make the folder window active by clicking anywhere in the window, then select all of the files.
- 5 Drag the selected image files onto the PictureViewer application's icon to open them.

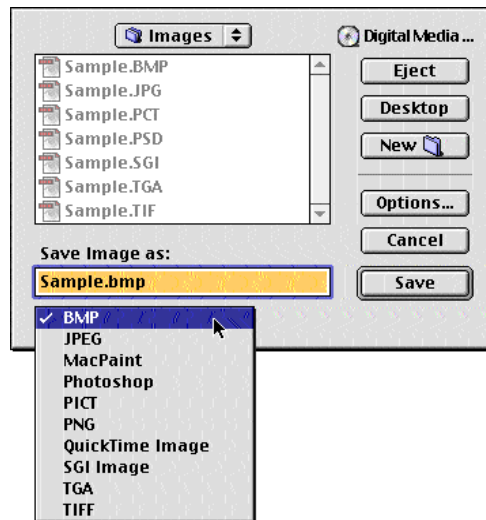
Note that PictureViewer can easily read each of the various file formats and opens the images in separate windows.

- 6 Close the image windows, leaving only one window open .

You can choose any of the images to leave open.

- 7 Choose Export from the File menu.

In the dialog box that appears, note the pop-up menu on the lower-left where you can select one of several available file formats to save the file. Several of the file formats also allow you to specify additional saving options.



- 8 Choose the JPEG file format from the pop-up menu, then click Options on the right side of the dialog box.

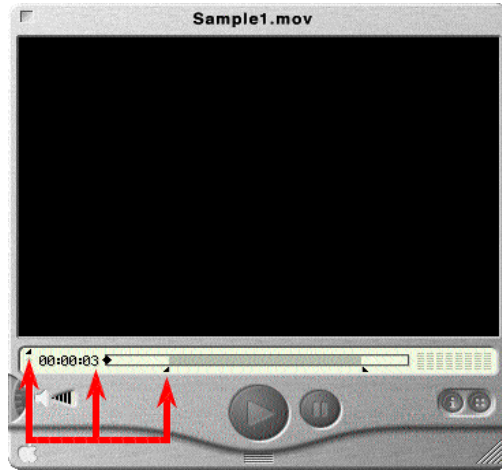
The JPEG Options dialog box appears. You can select the level of JPEG compression desired, or select a target size for the output file.

- 9 Click OK, then click Save to save the file in the new file format.

Familiarizing yourself with QuickTime Player

- 1 In the QuickTime Folder on your hard disk, double-click the QuickTime Player application icon to open it.
- 2 Choose Open Movie from the File menu.
- 3 In the dialog box that appears, select the Sample Movie icon located in the QuickTime Movie folder; then click Open.

The markers on the control bar indicate the beginning and end of a selected clip within the movie. The timestamp shows the hour, minute, and second of the current frame view of the movie. The position of the current frame is indicated by the diamond-shaped icon in the control bar.



- 4 Drag each marker to reset its position.

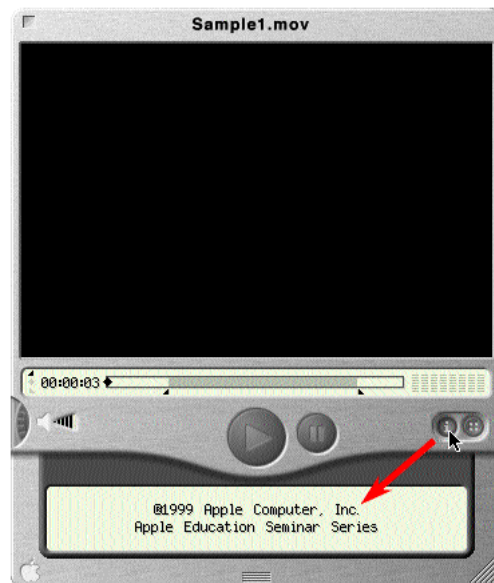
The timestamp read-out changes to reflect the timestamp of the marker you are moving. You can set the movie to play only the frames in the selected area.

- 5 Choose Play Selection Only from the Movie menu; then click the Play button.

The diamond-shaped controller stops at the Stop marker in the control bar.

Click the Play button again to repeat the clip.

- 6 Click the **i** button on the lower-right of the window to see any available copyright or descriptive information about the movie.



- 7 Click the **i** button again to retract the information field.
- 8 Click the **::** button to reveal an additional controls panel.



You use these controls to adjust the balance and tone of any audio, and to fast forward, fast reverse, step frame-by-frame, or quickly access the end or beginning of the movie.

- 9 Click the **::** button again to retract the additional controls panel.
- 10 Bookmark this movie by choosing Add Favorite from the Favorites menu.

You bookmark a movie so you can see it again whenever you want to. A bookmarked movie is added to the bottom of the Favorites menu.

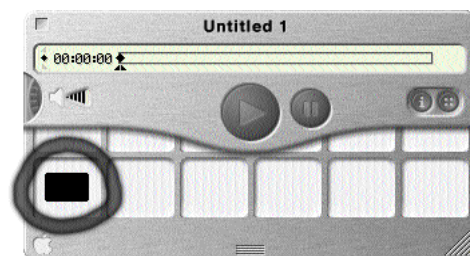
- 11 Close the movie by clicking the window's close box.

Using the Favorites drawer

- 1 Choose New Player from the File menu to open a blank player window.
- 2 Choose Open Favorites Drawer from the Favorites menu.

You can also drag down on the hashed section at the bottom of the viewing window.

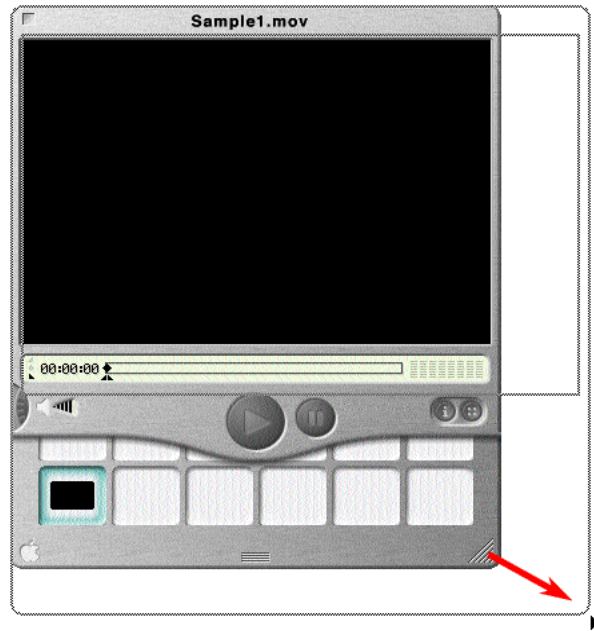
The thumbnail drawer of the bookmarked movies appears at the bottom of the Player window. A thumbnail of Sample Movie should appear in the drawer.



- 3 Click the thumbnail to open Sample Movie in QuickTime Player.

Resizing a movie

Drag the hashed area at the lower-right corner of the Player window to resize the movie.



You can return the movie to its default size by choosing Normal Size from the Movie menu.

Configuring QuickTime Player

- 1 Choose Preferences from the Edit menu; then choose General from the submenu.

You can specify that each newly opened movie appears in its own window, and that opened movies automatically start to play.

- 2 Click Cancel.